

Richard Strauss  
Ein Heldenleben

(1/4)

(lebhaft bewegt)

Soloviola. *viel ruhiger* *p* *Lebhaft* *mf* *2*

*viel ruhiger* *sfz* *23* *poco calando* *sfz*

*beinahe doppelt so schnell* *(heuchlerisch schmachkend)* *f* *Wieder sehr* *1 24* *ruhig* *3*

*(lustig)* *beinahe doppelt so schnell* *(Solo)* *leichtfertig* *mf* *25* *Wieder sehr ruhig;* *voll Sehnsucht* *3*

*zart, etwas sentimental* *viel lebhafter* *(übermütig)* *p* *f* *26*

*cresc.* *ff* *ff sehr schurf*

*calando* *dim.* *sehr ruhig* *getragen* *mf*

*doppelt so schnell* *(spielend)* *mf* *6* *6* *6* *6* *6* *6* *6* *6*

Ein Heldenleben

27 wieder etwas ruhiger *f* 1 *f* *dim.* *ppp* (liebenswürdig)

hafter 6 *p* *poco ritard.* *dr* 28 *Wieder langsamer* *poco accel.* *a tempo* *ff* (lustig)

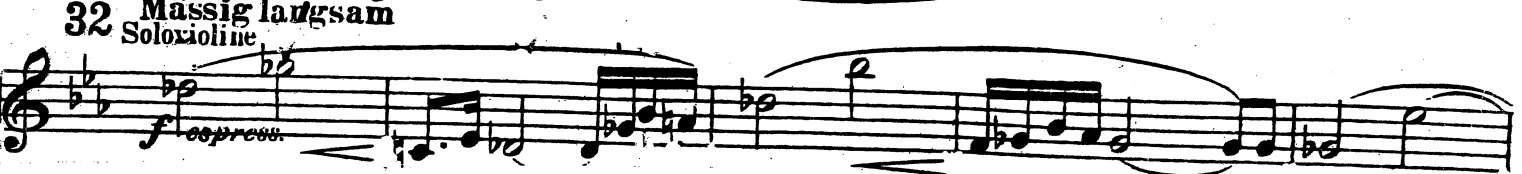
immer schneller und rasender *cresc.* *ff*

plötzlich wieder ruhig und sehr gefühlvoll *p* *smorz.*

29 *espr.* *f* *drängend*

(beruhigend) *p* 30 *drängend und immer heftiger* *ff* 20

Solovioline *sfz* (sornig) *sfz* *sfz* *sfz* *fff* (schnell und keifend)



Richard Strauss  
Ein Heldenleben

( 4/4 )

This image shows a page of a musical score for Richard Strauss' 'Ein Heldenleben'. The score is written for a single melodic line in 4/4 time. It consists of four staves of music. The first staff begins with a treble clef and a key signature of one sharp (F#). It contains measures 33, 34, and 35. Measure 33 features a triplet of eighth notes (F#, G#, A#) followed by a quarter note (B). Measure 34 continues with a quarter note (B), a quarter rest, and a quarter note (C#). Measure 35 starts with a quarter note (D#), followed by a quarter rest, and a quarter note (E#). The second staff begins with a treble clef and a key signature of one flat (Bb). It contains measures 36 and 37. Measure 36 features a quarter note (F), a quarter rest, and a quarter note (G). Measure 37 continues with a quarter note (G), a quarter rest, and a quarter note (A). The third staff begins with a treble clef and a key signature of one flat (Bb). It contains measures 38 and 39. Measure 38 features a quarter note (Bb), a quarter rest, and a quarter note (Cb). Measure 39 continues with a quarter note (Cb), a quarter rest, and a quarter note (Db). The fourth staff begins with a treble clef and a key signature of one flat (Bb). It contains measures 40 and 41. Measure 40 features a quarter note (Eb), a quarter rest, and a quarter note (Fb). Measure 41 continues with a quarter note (Fb), a quarter rest, and a quarter note (Gb). The score includes various musical notations such as treble clefs, key signatures, time signatures, notes, rests, and dynamic markings like 'cresc.' and 'molto espr.'. There are also some handwritten annotations and a small '35' written above the second staff.

33

cresc.

35

molto espr.

cresc.